



GFA AIRWORTHINESS DIRECTIVE

TYPE AFFECTED: PW-6U Serial no.s 78.02.07 to 78.02.10 and 78.03.01 to 78.03.03

SUBJECT: Inspection of push rod ends installed in aileron spoiler and elevator drives.

BACKGROUND: Instances have occurred where push rod ends of incorrect dimensional tolerance have been fitted.

DOCUMENTATION: Polish Civil Aviation Office has issued AD SP-0085-2003A. PZL Swidnik Mandatory Bulletin BO-78-03-06 is also attached and forms part of this AD.

ACTION REQUIRED: As per instructions detailed in the Mandatory Bulletin, measure rod ends, and replace with factory supplied components if necessary.

WEIGHT AND BALANCE: Nil effect

IMPLEMENTATION: Before further flight.

COMPLIANCE: The requirements of this GFA Airworthiness Directive are mandatory. This Directive is issued pursuant to the Rules and Regulations of the Gliding Federation of Australia.

SIGNED:

John G Viney
CHIEF TECHNICAL OFFICER AIRWORTHINESS

For and on behalf of:

© THE GLIDING FEDERATION
OF AUSTRALIA



COMMUNICATION EQUIPMENT FACTORY
„PZL-ŚWIDNIK”
STOCK COMPANY

Al. Lotników Polskich 1
21-045 Świdnik, Poland
Tel. (+48 81) 468 09 01, 751 20 71
Fax (+48 81) 468 09 19, 751 21 73

ULC Approval/Certificate:
D-06/JA/2000/1

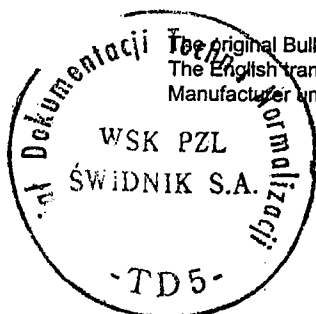
MANDATORY BULLETIN No. BO-78-03-06

NAME-TYPE/MODEL: PW-6U sailplane

SERIAL NUMBERS: Sailplanes, S/N 78.02.07 to 78.02.10 and 78.03.01 to 78.03.03

SUBJECT: INSPECTION OF PUSH-ROD ENDS

Compliance: Immediately after receiving the bulletin



The original Bulletin in Polish language was approved by ULC.
The English translation of the original was approved by the
Manufacturer under delegated authority of ULC

Agnieszka Depa
ULC-Authorized Interpreter



PW-6U

I

In relation to a case of exceeding the minimum dimension of the push-rod end S/N 78.21.215.00.00, it is required to make the measurement of all ends installed in the PW-6U sailplane in accordance with the Sketch No. 1 enclosed to this bulletin. The ends are installed in wings in the aileron control system and in the air brakes (altogether 5 pcs per sailplane).

II

This bulletin is intended to advise the PW-6U sailplane operators that if the dimension defined on the sketch is found to be less than 4.2 mm, the flights should be discontinued and the sailplane must be parked until a particular push-rod end is replaced with a new one.

III

Performance of work:

The activities related with measurement of ends shall be performed by the sailplane operator. In case the measured parameter is less than the acceptable one, a new end must be ordered. For this purpose, send the following information to „PZL-Świdnik” S.A. onto the fax No. (+48 81) 468 09 18: sailplane S/N, location of the end installation and measurement result. This shall be the basis for the free-of-charge ordering of a new end at „PZL-Świdnik” S.A. The sailplane manufacturer shall deliver, at his own expense, the new ends S/N 78.21.215.00.00 and the retaining washers preventing the ends against loosening. The ends shall be replaced with new ones by the operator at his own expense.

IV

Recording the work:

Depending on the scope of performed work, make the appropriate entry in the Sailplane Log Book, Chapter II:

1. In case the dimensions of five push-rod ends are correct:
„Dimensions of push-rod ends S/N 78.21.215.00.00 are correct”
2. In case the dimensions are found to be less than acceptable, after replacing the ends with new ones:
„Push-rod ends S/N 78.21.215.00.00 replaced with new ones. /Specify quantity of new push-rod ends and their installation location/. Dimensions of other push-rod ends are correct.”

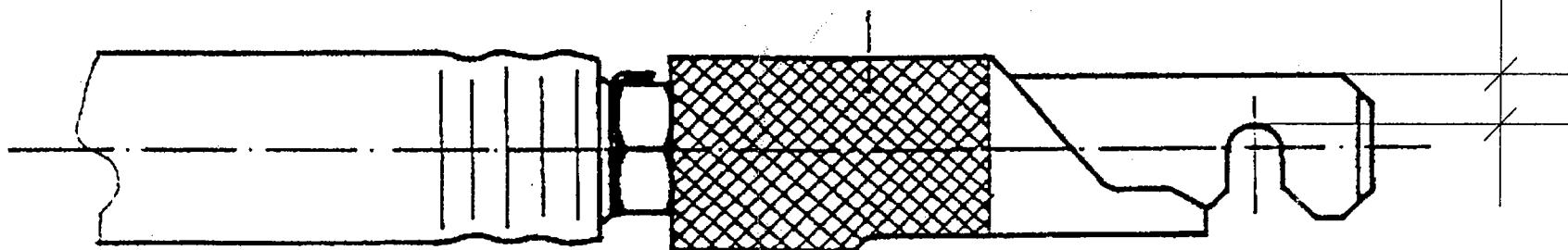
This entry should be confirmed with the date and stamp.
Specify this bulletin number for reference.

Prepared by: A. Woś
Verified by: M. Mikosz



PW-6U

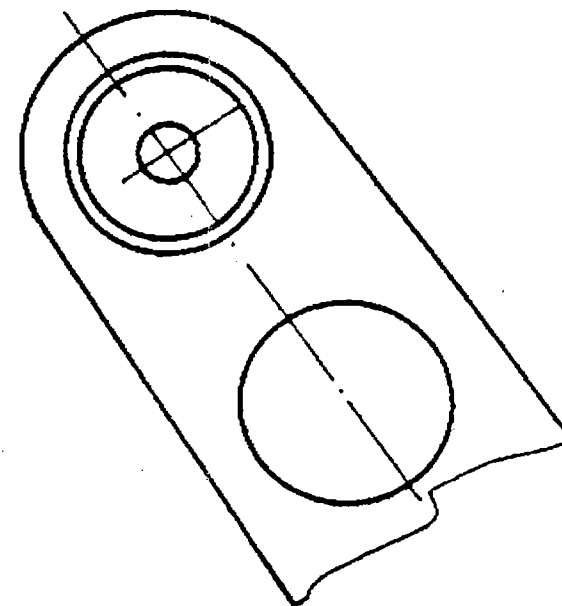
$A_{\text{Minimum}} = 4.2 \text{ mm}$



NOTE:

Inspect push-rod ends in the following sailplane control systems:

1. Aileron control system (L/H, R/H)
2. Air brake control system (L/H, R/H)
3. Elevator control system



Sketch 1: Push-rod end