



## AIRWORTHINESS DIRECTIVE

TYPES AFFECTED:

Mini-Nimbus B  
Mini-Nimbus C (up to Serial No. 110)  
Nimbus 2B  
Janus B

SUBJECT:

Elevator drive bracket - earlier type (Sketch 1 or 3)  
Later type (Sketch 2) is not affected.

BACKGROUND:

Difficulties in the control of the sailplane were encountered when an earlier type elevator drive bracket broke on one side in flight. The schempp-Hirth factory have issued Technical Notes TN 386-24, TN 295-19 and TN 328-8.

ACTION:1. Each Daily inspection until Action 2 or 3 is accomplished

On sailplanes having the earlier type elevator drive bracket according to sketch 1 or sketch 3, a visual inspection for possible cracks must be carried out while twisting the two elevator halves against each other.

2. Before 31st January 1989

The earlier type elevator drive bracket according to sketch 1 must either be replaced by a reinforced bracket (as shown in sketch 2) or be reinforced by means of welding metal strips according to sketch 4.

3. Before 31st January 1989

On sailplanes having an earlier type elevator drive bracket according to sketch 3 (bracket with bushings), a reinforcement by means of welding on metal strips according to sketch 4 is required.

NOTE: Installation of the elevator drive bracket must be done in accordance with Drawing No. HS5-30.55/1

IMPLEMENTATION:

1. The daily inspection must be accomplished by a GFA Daily Inspector or higher authority.

2 & 3. Fitting of the new or reinforced elevator drive bracket is to be done by a DoA 1109 inspector authorised C. of A. any type and entered in the sailplane logbook.

Any welding must be done by a DoA licenced aircraft welder or a GFA authorised welder and entered in the sailplane logbook.

WEIGHT AND BALANCE:

The effect is negligible

Issued by:

Chief Technical Officer,  
Airworthiness

15.11.1988

For and on behalf of:

GLIDING FEDERATION OF AUSTRALIA

Sheet 1 of 5

GFA AD 323	Issue 2
15.11.1988	Sheet 2 of 5

**MATERIALS:**

New elevator drive bracket (Drawing No. Nimbus - 2B 30.055  
modif.(a) is available from -

Schempp-Hirth Flugzeugbau GmbH  
Postfach 1443  
D-7312 KIRCHHEIM/TECK  
WEST GERMANY

or their Australian agent.

4130 steel to reinforce existing earlier type elevator drive  
bracket is available from local aviation supply firms.

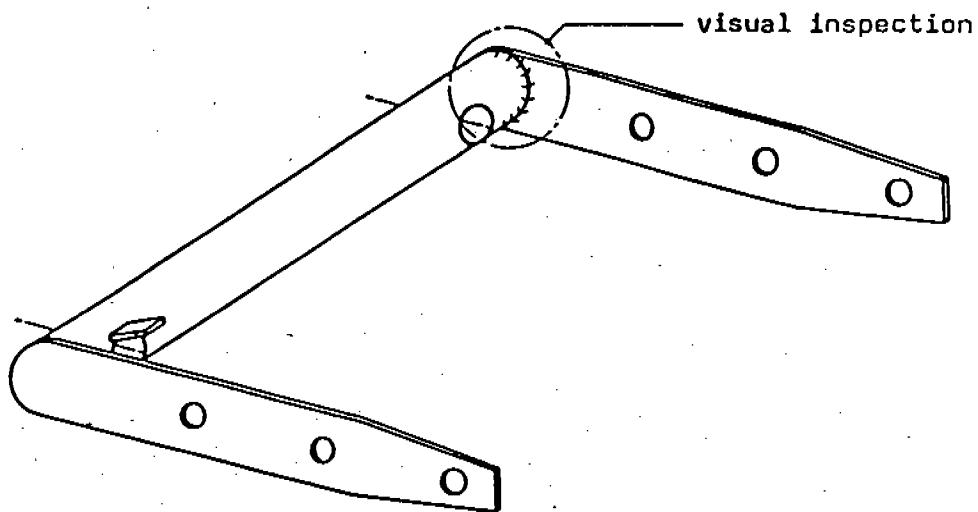
**COMPLIANCE:**

The requirements of this Airworthiness Directives are mandatory.  
This Directive is issued pursuant to Civil Aviation  
Regulations under the delegated authority of the Civil  
Aviation Authority.

GFA AD 323	Issue 2
15.11.88	Sheet 3 of 5

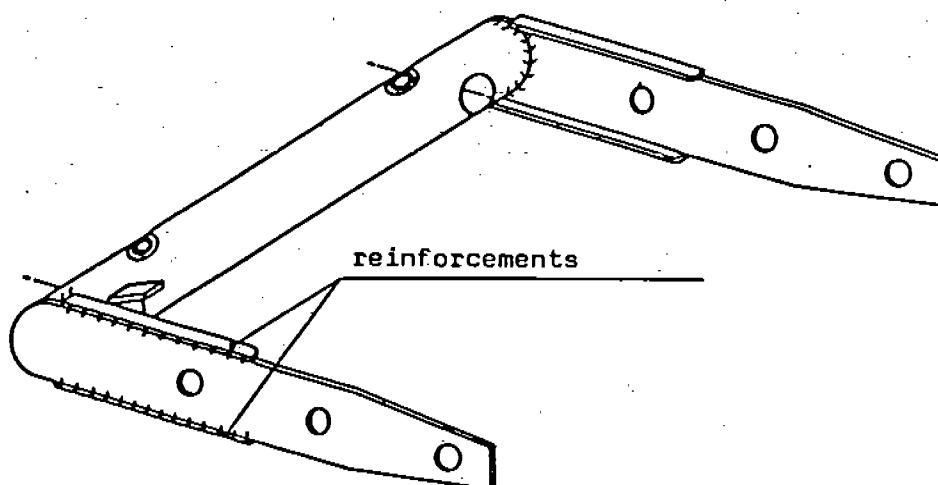
# SKETCH 1

## earlier type elevator drive bracket



# SKETCH 2

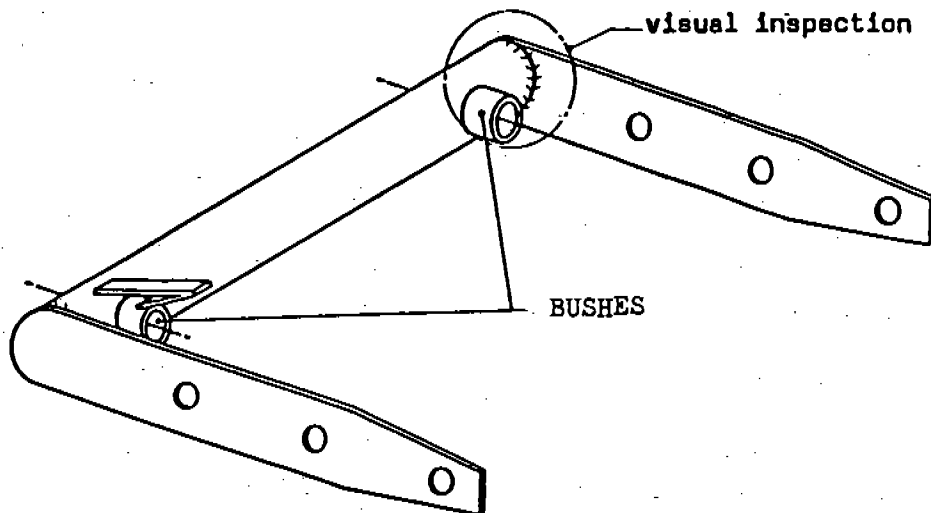
## reinforced elevator drive bracket



GFA AD 323	Issue 2
15.11.88	Sheet 4 of 5

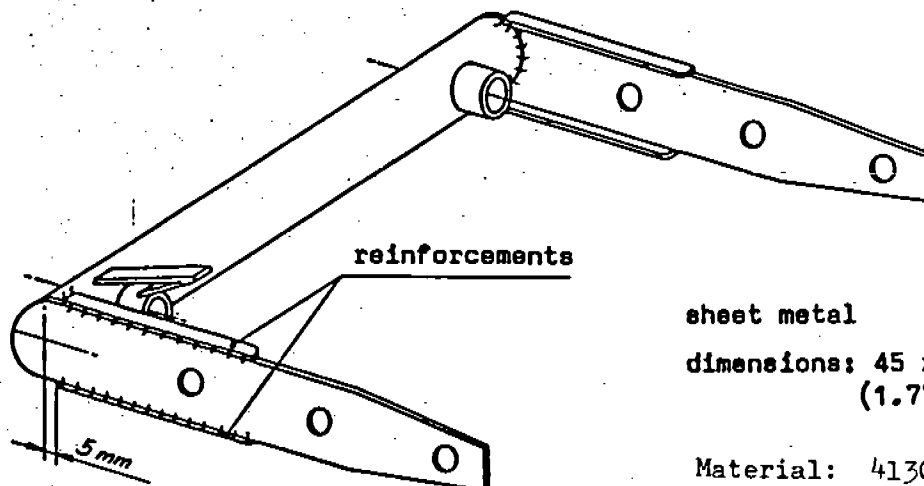
### SKETCH 3

#### earlier type elevator drive bracket



### SKETCH 4

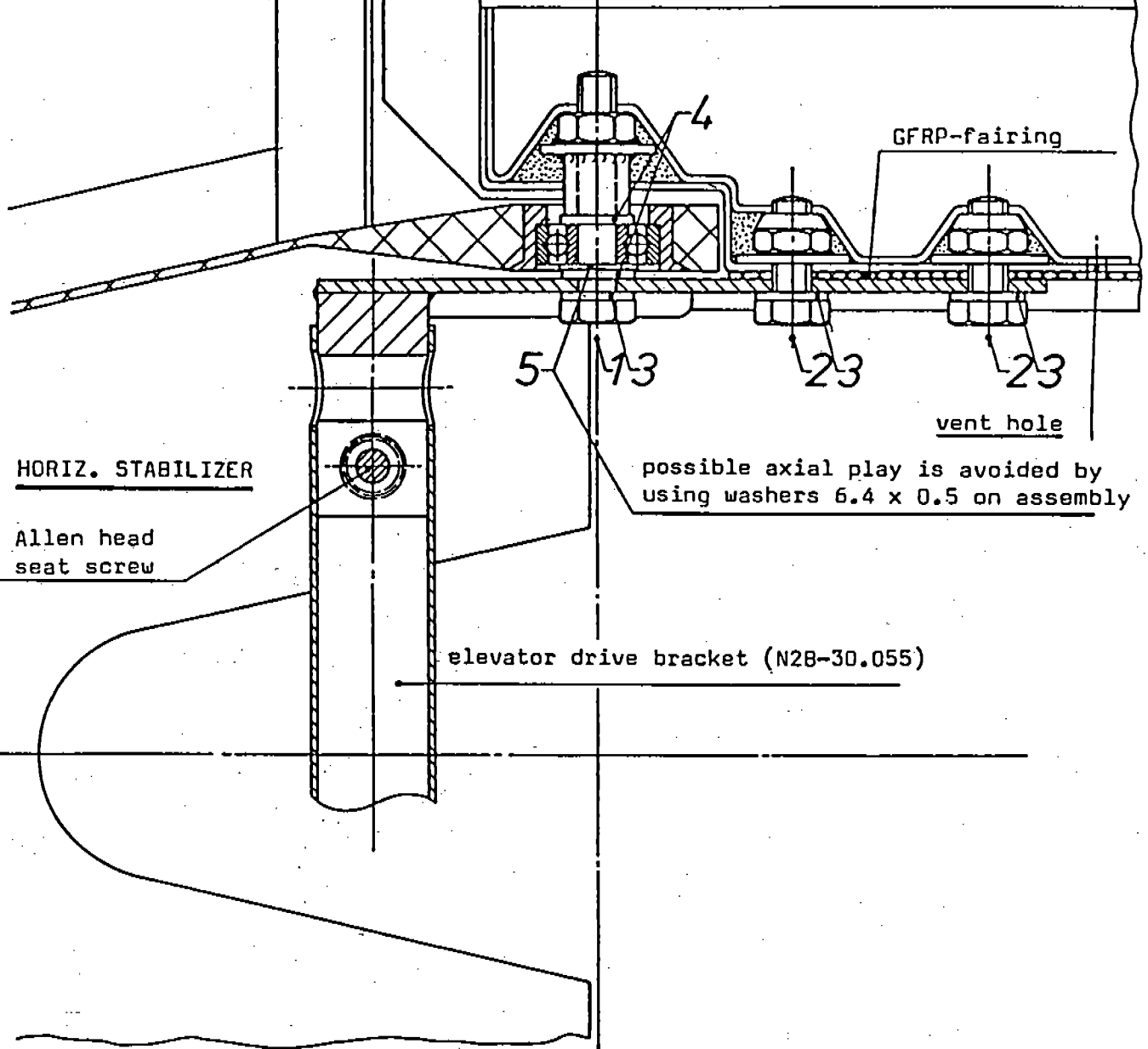
#### reinforced elevator drive bracket



sheet metal

dimensions: 45 x 5 x 1.5 mm  
(1.77 x 0.20 x 0.06 in.)

Material: 4130 steel  
Weld with gas or T.I.G.

ELEVATOR

5	2	Washer	6,4 x 0,5	ähnl. DIN 125-St
4	4	Washer	6,4	DIN 125-St
3	6	Lock washer	J 6,4	DIN 6797
2	4	Hex. bolt	M 6 x 16	DIN 933-8.8
1	2	Hex. bolt	M 6 x 35	DIN 931-8.8
Teil	Stück	Benennung	Abmessung	Werkstoff (Norm)