

AIRWORTHINESS ADVICE NOTICE

TYPE AFFECTED: IS-28M2 / IS-28M2/80HP

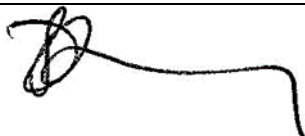
SUBJECT: Miscellaneous airworthiness information.

APPROVED MODIFICATIONS: EASA Major Change Approval 10065553 has been promulgated relating to a revised time before overhaul (TBO). This major change approval is included as annex to this airworthiness advice notice. For continued service past 35 calendar years, the owner / operator must contact the type certificate holder and ensure all associated manuals are current and applicable and continuing airworthiness instructions are implemented. Contact Aeroclubul Romaniei at camo@aeroclubulromaniei.ro to obtain revised manuals referenced in the major change approval. Refer type certificate holders website for all current continuing airworthiness information.

DEFECTS:

1. The empennage structure on IS28M2 types is similar to the IS-28B2 so the following defect is included in this advice notice. AWA 2008/1 was raised at the time but is now cancelled. An IS-28B2 left elevator hinge pin was found broken in 2008. Further inspection showed the right hinge pin on the right elevator was also cracked. The hinge pins in question are the inner ones and also serve as a locating pin for the elevator connecting yolk which couples the left and right elevator root ribs together during rigging and transmits the drive from the elevator push rod. It is not possible to detect the failure unless the tailplanes are in the folded position and the connecting yolk is separated from the elevator root ribs. At annual inspection it is recommended that hinge pin and flange area is thoroughly cleaned and visually inspected for cracks. Use X10 magnifying glass. A high-resolution digital camera with magnification may also assist in the inspection. Refer photo 1 to 3 on page 2 of this notice.

SIGNED:



GFA Chief Technical Officer

For and on behalf of:

**THE GLIDING FEDERATION
OF AUSTRALIA**

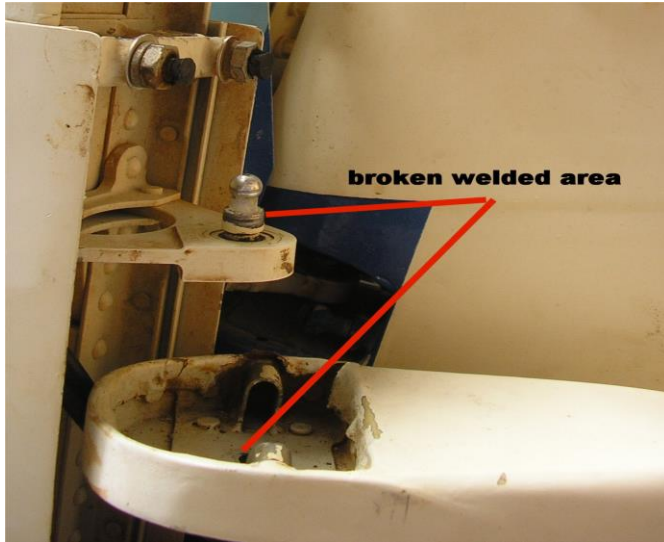


Photo 1. Left elevator hinge and root area showing hinge pin completely detached from bracket on root rib.



Photo 2. Left hinge pin failure area.



Photo 3. Right elevator hinge pin showing cracking around 40% of the circumference.

MAJOR CHANGE APPROVAL

10065553

This Certificate/Approval is issued by EASA, acting in accordance with Regulation (EC) No. 216/2008 on behalf of the European Community, its Member States and of the European third countries that participate in the activities of EASA under Article 66 of that Regulation and in accordance with Commission Regulation (EU) No. 748/2012 to

AEROCUBUL ROMANIEI

LASCAR CATARGIU NR. 54
010673 BUCURESTI
ROMANIA
EASA.AP.439

and certifies that the change in the type design for the product listed below with the limitations and conditions specified meets the applicable Type Certification Basis and, if applicable, environmental protection requirements when operated within the conditions and limitations specified below:

Type Certificate Number: EASA.A.453

Type Certificate Holder: AEROCUBUL ROMANIEI

Type: IS sailplanes

Model: IS-28M2, IS-28M2/80HP
IS-28M2/G, IS-28M2/GR

Description of Design Change:

TBO revision in accordance with the Master Document List, Aeroclubul Romaniei document, AR-IS-28M2.001, at revision 2, dated January 01, 2018.


EASA Certification Basis:

The Certification Basis (CB) for the original product remains applicable to this certificate/ approval. The requirements for environmental protection and the associated certified noise and/ or emissions levels of the original product are unchanged and remain applicable to this certificate/ approval.

See Continuation Sheet(s)

For the European Aviation Safety Agency

Cologne, Germany, 18 May 2018



Dominique ROLAND
Head of General Aviation and
Remotely Piloted Aircraft Systems (RPAS)

Associated Technical Documentation:

- Master Document List, Aeroclubul Romaniei document, AR.IS-28M2.001, at revision 2, dated January 01, 2018;
 - Aircraft Maintenance Manual pages in accordance with Master Document List, Aeroclubul Romaniei document, AR.IS-28M2.001, at revision 2, dated January 01, 2018;
- or later revisions of the above listed document(s) approved under the EASA system.

Limitations/Conditions:

None

- End -