

COMMONWEALTH OF AUSTRALIADEPARTMENT OF TRANSPORTAIR TRANSPORT GROUP**CANCELLED**AIRWORTHINESS ADVISORY NOTICEGFA/AN 21/GLASFLUGEL

Glider Types affected: Standard Libelle 201 and 201B from  
serial No. 95 to 520 inclusive.

Subject:

Modification to airbrake control to reduce excessive operating force.

Method:

The airbrake drive shaft according to drawing No. 301-49-1/2 is replaced by the shaft according to drawing No. 201-49-2 with a lever arm increased from 50 to 65 mm.

With the dive brakes extended, the dimension from the top surface of the wing to the top surface of the dive brake must be not less than 108mm.

Background:

This modification has been introduced as a result of a number of operational difficulties arising from high operating forces in manipulating Libelle airbrakes and is detailed in Glasflugel Technical Note No. 201-19. The modification is incorporated as standard from glider serial No. 521.

Compliance:

This modification is optional, but it is strongly recommended that it be incorporated where the glider is flown by pilots of slight build. Material for the modification may be obtained from the Agent - Edmund Schneider Pty. Ltd., Two Wells Road, Gawler, S.A. 5118.

**CANCELLED***Douglas Lyon*

Douglas Lyon  
CHIEF TECHNICAL OFFICER AIRWORTHINESS  
GLIDING FEDERATION OF AUSTRALIA

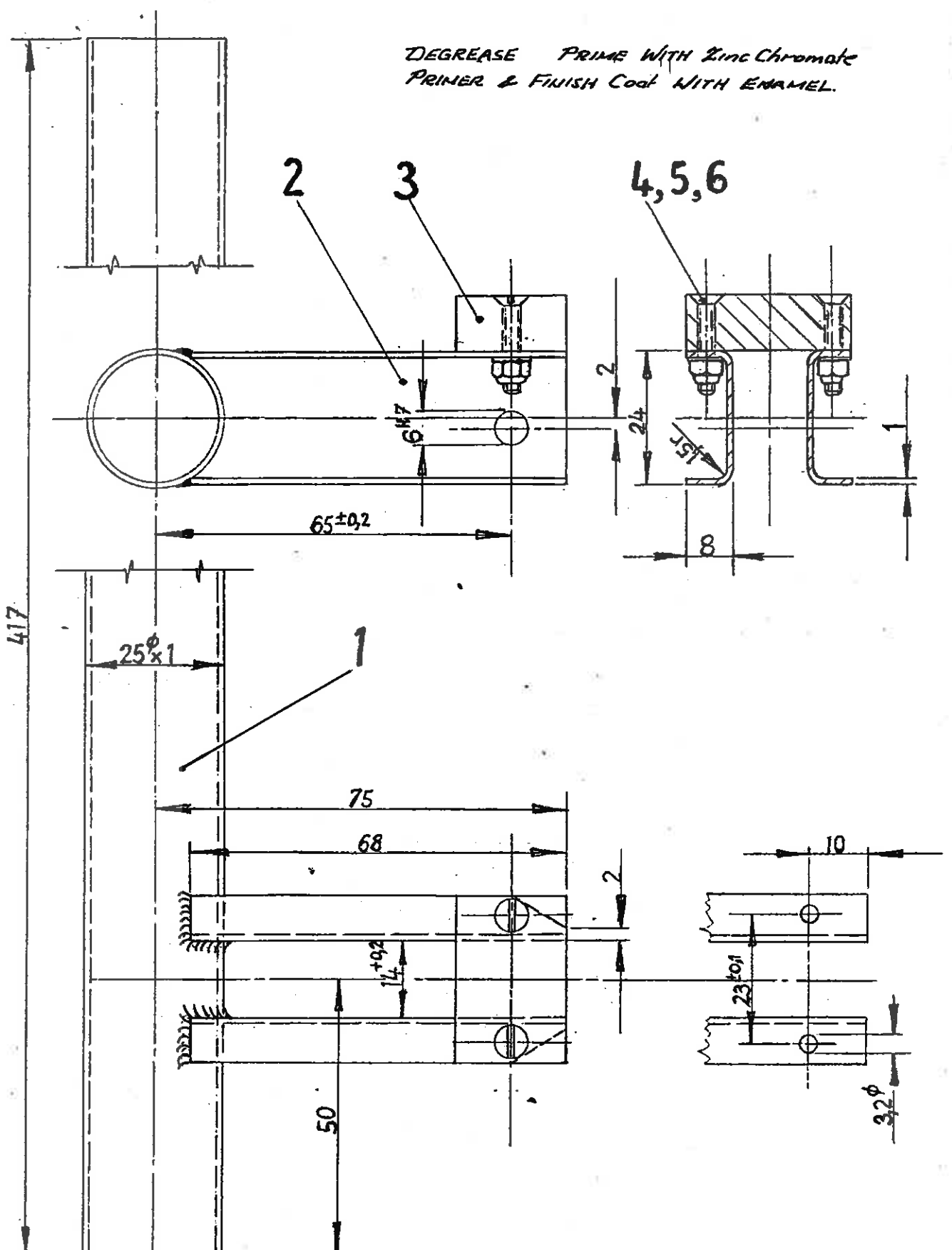
DATE OF ISSUE: 11TH MARCH, 1975.

Distribution:

All Libelle Owners (from No. 95)  
C.T.O./A & Ops  
R.T.O.'s/A  
A.T.O.  
D of T

GFA Secretary  
E. Schneider  
R. Keane  
G. Detto  
R. Martin  
D. Vanstan  
G. Simpkins

DEGREASE PRIME WITH Zinc Chromate PRIMER & FINISH Coat WITH ENAMEL.



- 6 (2-OFF) NYLOC LOCKNUT. M3 DIN 935
- 5 (2-OFF) WASHER 3,2 DIN 125
- 4 (2-OFF) C/SK. SCREW. A M3x18 DIN63
- 3 (1-OFF) NYLON BLOCK 3012002zchnng. Nr. 201-49-3
- 2 (2-OFF) CHANNEL <sup>[SAE 1025, 4130]</sup> 36x68x1 <sub>[OR 1-7734, 8]</sub>
- 1 (1-OFF) TUBE <sup>[SAE 1025, 4130]</sup> 25φx1x417 <sub>[OR ST 38 BK.]</sub>

AB W.Nr. 521

1:1	BK-Antriebswelle	201-49-2	21. 3. 74
-----	------------------	----------	-----------